

HANCOCK PROSPECTING PTY LTD

Alpha Coal Project Environmental Impact Statement

M | Consultation Report





CLIENTS | PEOPLE | PERFORMANCE

Hancock Prospecting Pty Ltd

Report for Alpha Coal Project
(Rail)

Public Consultation Report

July 2010



Contents

1.	Introduction	1
1.1	Background	1
1.2	Public Consultation Strategy	2
1.3	The Project Team	2
2.	Public Consultation Activities	4
2.1	Overview	4
2.2	Community Information Sessions	4
2.3	Meetings with Regional Councils	5
2.4	Regional Shows	5
2.5	1300 Telephone Number	5
2.6	HPPL Project website	5
2.7	Project Factsheet	5
2.8	Database	6
3.	Results of Consultation Activities	7
3.1	Community Information Sessions	7
3.2	Meetings with Regional Councils	11
3.3	Regional Shows	15
3.4	Project Factsheet and Feedback Forms	17
4.	Summary of Results	19
4.1	Overview	19
4.2	Results	19
4.3	Incorporation of Results	20



Table Index

Table 2-1	Summary of Community Consultation and SIA Stakeholder Consultation Activities	4
Table 3-1	Issues Raised at the Alpha Community Information Session	7
Table 3-2	Issues Raised at the Clermont Community Information Session	9
Table 3-3	Issues Raised at the Collinsville Community Information Session	9
Table 3-4	Issues raised at the Bowen Community Information Session	10
Table 3-5	Issues Raised by the Barcaldine Regional Council	11
Table 3-6	Issues Raised by the Isaac Regional Council	13
Table 3-7	Issues Raised by the Whitsunday Regional Council (Collinsville)	14
Table 3-8	Issues Raised by the Whitsunday Regional Council (Bowen)	15
Table 4-5	Community Response on Feedback Forms	17
Table 4-1	Summary of Results Per District as expressed by stakeholders	19

Figure Index

Figure 1-1	The Project	3
Figure 4-1	Alpha Community Information Session	7
Figure 4-2	Stand at the Alpha Regional Show	16
Figure 4-3	Stand at the Clermont Regional Show	17

Appendices

- A Project Team
- B Advertisements for Community Information Sessions
- C Snapshot of HPPL website
- D Factsheet
- E Feedback Form



Acronyms

BRC	Barcaldine Regional Council
EIA	Environmental Impact Assessment
EIS	Environmental Impact Statement
FIFO	Fly-in/fly-out
IRC	Isaac Regional Council
SIA	Social Impact Assessment
TOR	Terms of Reference
WRC	Whitsunday Regional Council



1. Introduction

1.1 Background

The Public Consultation Process was developed and implemented within the stakeholder consultation process for the Environmental Impact Assessment (Part A, Section 7 of the TOR) and the broader Project consultation process undertaken by Hancock Prospecting Pty Ltd (HPPL).

This report focuses on Part B, Section 1.9 of the Alpha Coal Project Terms of Reference (TOR), "Public consultation process". It provides an overview of the Public Consultation Process and key findings.

1.1.1 Purpose

In September 2009, GHD was commissioned by Hancock Prospecting Pty Ltd (HPPL) to undertake an Environmental Impact Statement (EIS), incorporating the Public Consultation process for the Alpha Coal Project's proposed rail line (herein referred to as the Project).

The purpose of the Public Consultation Process for the Environmental Impact Assessment (EIA) was to provide information on the Project and provide opportunities for the community to participate in the EIA process. More specifically, the Public Consultation Process aimed to:

- ▶ Identify the different opinions of various interest groups about the Project;
- ▶ Explain the EIA methodology and how the public can provide input into the EIA;
- ▶ Provide an understanding of the regulatory approval process; and
- ▶ Seek local information and feed into the Project decision making processes.

Consultations for the Social Impact Assessment (SIA) were integrated with the Public Consultation Process and have been reported in the SIA Report (refer to Volume 3: Section 1).

1.1.2 Project Overview

HPPL is proposing to construct a standard gauge, 495 km long railway line for the purposes of transporting processed coal from the Alpha coal mine site to the proposed Port of Abbot Point, Multi Cargo Facility in Bowen (refer to Figure 1-1). The proposed railway line is a vital piece of infrastructure that will enable export of 60 to 80 Mtpa of quality thermal coal to overseas markets.

The Project stretches between the Alpha coal mine, 38 km northwest of the Alpha Township and the Abbot Point coal export terminal, 25 km north of Bowen. The alignment of the Project has been selected on the basis of several factors, primarily environmental, engineering, economic and geotechnical. Further details of the alignment selection are included in Volume 3: Section 2.

The rail corridor proceeds in a generally north-easterly direction from the Alpha mine, crossing the Belyando River and several of its tributaries in the first 100 km. The railway crosses generally relatively flat lowlands before commencing a gentle climb from near Eaglefield adjacent to the Suttor River, to a point near the existing Newlands mine. This is the highest point on the railway at approximately 300 m above sea level. In the vicinity of the Newlands mine, it runs parallel to the Queensland Rail (QR) Northern Missing Link railway and the Newlands railway for approximately 70 km through a pass in the Leichhardt Range to a point near the Bowen River. It then travels in a north westerly direction crossing the Bowen River, then passing down the Bowen River valley through mostly grazing land toward Mt



Herbert, where it passes to the west of Mt Herbert through a pass in the Clarke Range. From this point, it travels north-easterly crossing the Bogie River, then finally in an easterly direction entering the Abbot Point area on its western boundary.

The railway passes approximately 70 km to the northeast of the town of Clermont, 55 km to the northeast of the town of Moranbah, 35 km to the east of Mt Coolon, 20 km to the west of Collinsville, and enters the Abbot Point area 25 km west of Bowen.

1.2 Public Consultation Strategy

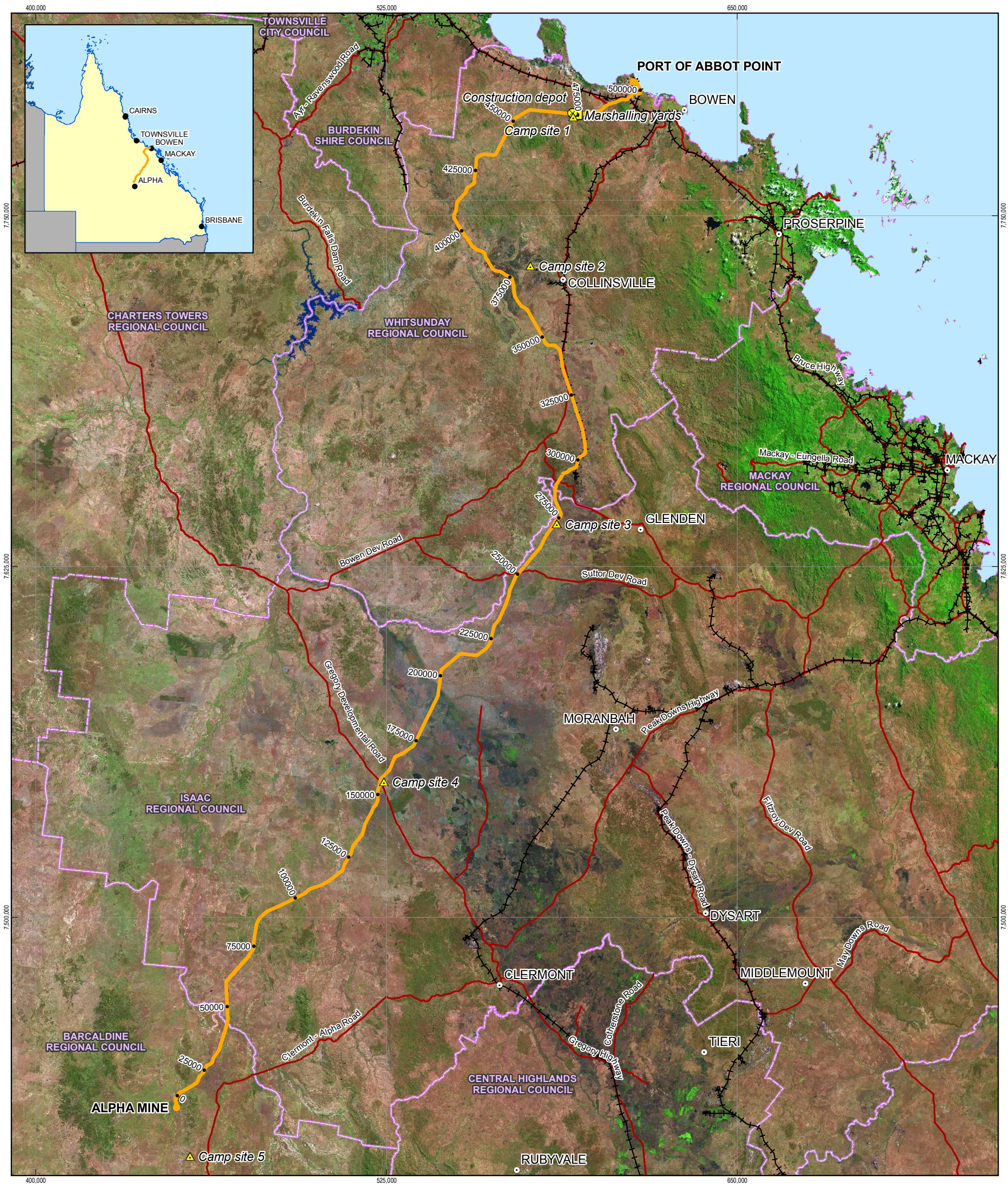
A draft Public Consultation Strategy was developed based on a scoping exercise to identify potential stakeholders. The draft Public Consultation Strategy was provided to HPPL for approval prior to any public consultation activities being undertaken.

The Public Consultation Strategy identified:

- ▶ The types of activities to be undertaken;
- ▶ Timing;
- ▶ Target the stakeholder/community representatives;
- ▶ Integrate with other EIS activities and the project development process;
- ▶ Consultation responsibilities;
- ▶ Communication protocols; and
- ▶ Reporting and feedback arrangements.

1.3 The Project Team

HPPL contracted Australasian Resource Consultants (AARC) and URS to undertake the EIA for the mine component of the Project and GHD to undertake the EIA for the rail component of the Project. AARC and GHD worked in collaboration to ensure consultation activities were maximised and stakeholder/communities did not feel over consulted. A list of the Project Team for each consultation activity is provided in Appendix A).

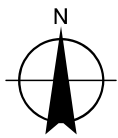


- LEGEND**
- Town
 - Camp
 - Marshalling Yards
 - Depot
 - Proposed Alignment
 - State Road
 - Existing Railway
 - Local Government Area

While every care is taken to ensure the accuracy of this product, the Department of Environment and Resource Management (DERM) makes no representations or warranties about accuracy, reliability, completeness or suitability for any particular purpose and disclaims all responsibility and all liability (including without limitation, liability in negligence) for all expenses, losses, damages (including indirect or consequential damages) and costs which you might incur as a result of the product being inaccurate or incomplete in any way and for any reason. © The State of Queensland. Department of Environment and Resource Management (DERM) 2009.

Source: See Copyright Details below and for full disclosure please read Section 18.2 - References in the EIS

1:1,250,000 (at A3)
0 5 10 20 30 40 50
Kilometres
Map Projection: Universal Transverse Mercator
Horizontal Datum: Geocentric Datum of Australia 1994
Grid: Map Grid of Australia, Zone 55



G:\4122090\GIS\MAPS\MXD\000_Overview_Location\41-22090_019_rev_a.mxd
Copyright: This document is and shall remain the property of Hancock Prospecting Pty Ltd. The document may only be used for the purpose for which it was produced. Unauthorised use of this document in any way is prohibited.
© 2010. While GHD Pty Ltd has taken care to ensure the accuracy of this product, GHD Pty Ltd, Hancock Prospecting Pty Ltd, GA, DMR and DERM make no representations or warranties about its accuracy, completeness or suitability for any particular purpose. GHD Pty Ltd, Hancock Prospecting Pty Ltd, GA, DMR and DERM cannot accept liability of any kind (whether in contract, tort or otherwise) for any expenses, losses, damages and/or costs (including indirect or consequential damage) which are or may be incurred as a result of the product being inaccurate, incomplete or unsuitable in any way and for any reason.

HANCOCK PROSPECTING PTY LTD
Alpha Coal Project
Environmental Impact Statement

STUDY AREA

Job Number | 41-22090
Revision | A
Date | 04-08-2010

Figure: 1-1



2. Public Consultation Activities

2.1 Overview

A summary of the Public Consultation Activities for the EIS is provided in Table 2-1.

Table 2-1 Summary of Community Consultation and SIA Stakeholder Consultation Activities

Event	Timing
Community Information Session # 1 – EIS Development	
▶ Alpha	Tuesday 4 May 2010
▶ Clermont	Wednesday 5 May 2010
▶ Collinsville	Thursday 6 May 2010
▶ Bowen	Friday 7 May 2010
SIA Stakeholder Consultations	-
▶ Meetings with Regional Councils	
– Barcaldine Regional Council (office in Alpha)	Tuesday 4 May 2010
– Isaac Regional Council	Wednesday 5 May 2010
– Whitsunday Regional Council	Thursday 6 and Friday 7 May 2010
▶ SIA Landholder case studies	8 May – 18 May 2010
Regional Shows	
▶ Alpha Show – staffed display	19 May 2010
▶ Clermont Show – staffed display	26 May 2010

Throughout the EIA process HPPL maintained a project freecall number (1300 279 766) and project webpage on the HPPL website.

2.2 Community Information Sessions

Community Information Sessions were held in Alpha, Clermont, Collinsville and Bowen. Each of the Regional Councils (Barcaldine, Isaac and Whitsunday) were consulted about potential dates, venues, timings and advertising. Advertisements for the Community Information Sessions were published in the following newspapers:

- ▶ Central Queensland News, Wednesday 28 April 2010
- ▶ Bowen Independent, Wednesday 28 April 2010 (main paper) and Friday 30 April 2010 (Collinsville page);
- ▶ Miners Midweek, Wednesday 28 April 2010; and
- ▶ Longreach Leader, Friday 30 April 2010.



Copies of the advertisements are provided in Appendix B. Letters of invitation were also sent to the directly impacted landholders.

The format of the Community Information Session were based on a 'walk through', where interested members of the public were greeted and directed to a team member who would be best suited to respond to their question or issue. The Community Information Sessions had an 'open door' policy where interested people could enter and leave at their own leisure. Participants in the Community Information Sessions were provided with opportunities to provide their feedback on the Project verbally (and notes taken by the Project Team members) or in writing (using the feedback forms).

2.3 Meetings with Regional Councils

Meetings with Barcaldine, Isaac and Whitsunday Regional Councils (Mayors, Councillors and staff) were organised to gain an understanding of the issues currently facing the regions and to identify the potential impact the Project would have. During the discussions the Project team members took notes on the issues raised by Regional Councils.

2.4 Regional Shows

There was an opportunity for HPPL to have staffed displays at the Regional Shows which were scheduled to occur during the EIA process. The Regional Shows are major region events which attract community members, tourists and local businesses. The Community Information Sessions relied on interested members of the public to attend the sessions, whereas the Regional Shows presented the opportunity for the Project to be part of an existing regional event where people will already be attending.

The purpose of attending the Shows was to gain a wider audience for the EIA process and to seek further input from community members. HPPL and GHD attended the regional shows in Alpha and Clermont. People who came to the stall at the Regional Shows were provided with opportunities to provide their feedback on the Project verbally (and notes taken by the Project Team members) or in writing (using the feedback forms).

2.5 1300 Telephone Number

HPPL established and maintained a 1300 number for the broader process of Project communications.

2.6 HPPL Project website

HPPL established and maintained a Project webpage (<http://hancockcoal.com.au/go/current-projects/the-alpha-coal-project>) on their corporate website (www.hancockcoal.com.au) for the broader process of Project communications. A snap shot of the webpage is provided in Appendix C.

2.7 Project Factsheet

Project factsheets for the different components of the Project (Alpha mine, Kevin's Corner mine and rail) were developed and handed out at all public consultation events (community information sessions and regional shows). Copies of the fact sheet were also left at the Regional Councils for the public to review. A copy of the rail factsheet is provided in Appendix D. The factsheets also included feedback forms which could be posted (reply paid) to GHD (refer to Appendix E).



2.8 Database

GHD maintained a database (www.consultationmanager.com.au) to record all consultations as part of the Public Consultation Process. The database was maintained from April 2010 until the submission of draft EIA reports to HPPL.

3. Results of Consultation Activities

3.1 Community Information Sessions

Four Community Information Sessions were held as part of the EIA process, in Alpha, Clermont, Collinsville and Bowen.

3.1.1 Alpha

The Alpha Community Information Session was held on Tuesday 4 May 2010 from 5.00 to 8.00pm at the Alpha Town Hall. A total of 19 people attended the Session.

Figure 3-1 Alpha Community Information Session



Source: photo provided by Ian Dymmock, AARC

Table 3-1 contains a list of issues raised by people who participated in the Alpha Community Information Session.

Table 3-1 Issues Raised at the Alpha Community Information Session

Topic	Issue Raised (as described by participant)
Social impact issues	<ul style="list-style-type: none"> ▶ The fly-in/fly-out nature of the workforce versus growing the local community (having the workforce based in Alpha or surround towns). Having a locally based workforce would increase the loyalty to the job and to the local community (including local spending benefiting local businesses). ▶ The social impact assessment should have been started in 2007 when the mine component of the Project was announced. Social impacts (such as an increase in property values) started to occur in 2007. ▶ Some older people have sold their properties and left Alpha because of concerns in relation to the Project. ▶ Need to look at the other towns in the region for development, such as Barcaldine and Jericho as options for a permanent workforce (rather than FIFO).



Topic	Issue Raised (as described by participant)
	<ul style="list-style-type: none"> There are a number of families who would relocate to Alpha if there was secure employment for one or both of the parents, Alpha needs young families. HPPL need to have a local liaison person based in town to keep the residents informed. Need to see the properties as people's homes, not just businesses. There are already people driving out to Alpha looking for work. Alpha needs to receive some of the benefits of the Project, don't just bypass town (e.g. better roads, better services (particularly medical services), education (more students, hence teachers at the school)). Potential impacts on the local Queensland Ambulance Service which is currently run by volunteers from the local area. Currently there is no incentive to relocate to Alpha, there are no services, how can Alpha compete with Brisbane (assumed base of the FIFO operation) with all its services and facilities? Need to support the elderly so they can stay in town. They are an important part of the community.
Economic issues	<ul style="list-style-type: none"> Alpha needs the financial benefits that could flow from the Project. Concern about bringing in an overseas workforce. Farmers also in business, they need to keep their 'shareholders' happy as well. If there is a FIFO operation, there will be no direct economic benefit for Alpha. Don't want the same situation happen to Alpha as what is happening to Clermont (Clermont is wearing the cost of mining but not receiving the benefits). There are already speculators in town pushing the house prices up, it is no longer affordable. House prices are already comparable to the coast. FIFO has a vicious circle, the property prices increase but there are not workers staying in town. Local businesses in town need some guarantee that the Project is going ahead so they can prepare to make the most of it. Need to have a local employment and procurement policy to support local businesses and contractors.
Cumulative impacts	<ul style="list-style-type: none"> Impacts on the water table from the HPPL mine but also the other proposed mines. Water is life and need water to run the properties. Coal mining versus primary production (the region is part of the food belt of Queensland). People asked if there were going to be two railway lines constructed and operated (referring to HPPL and Waratah proposed Projects).

3.1.2 Clermont

The Clermont Community Information Session was held on Wednesday 5 May 2010 from 3.00 to 7.00 pm at the Clermont Community Hall. A total of 41 people attended the Session. Table 3-2 contains a list of issues raised by people who participated in the Clermont Community Information Session.



Table 3-2 Issues Raised at the Clermont Community Information Session

Topic	Issue Raised (as described by participant)
Social impact issues	<ul style="list-style-type: none"> Concern over crossing of the Gregory Development Road (Charters Towers to Clermont), it is already busy, particularly on the change on mine shifts and the presence of road trains. There is a need for an overpass on level crossings. Need to have emergency evacuation procedures for the construction camps and for the relevant services to be aware of these plans. There needs to be on site security for camps. Need to stop the 'roo shooting' and there could be looting of local properties. Need to have a locally based community liaison officer (similar to Rio Tinto) and an overall liaison officer for the whole project. If the project is going to be using the Alpha-Clermont Road, it needs to be upgraded and maintained at the higher standard.
Economic issues	<ul style="list-style-type: none"> Concern about bringing in an overseas workforce. Need to employ locally (unlike Rio Tinto). No local benefits from a FIFO workforce. Consider transporting workforce from Clermont to Alpha (source of local employment).
Cumulative impact issues	<ul style="list-style-type: none"> People asked if there were going to be two railway lines constructed and operated (referring to HPPL and Waratah proposed Projects).

3.1.3 Collinsville

The Collinsville Community Information Session was held on Thursday 6 May 2010 from 3.00 to 7.00 pm at the Collinsville Community Centre. A total of 17 people attended the Session. Table 3-3 contains a list of issues raised by people who participated in the Collinsville Community Information Session.

Table 3-3 Issues Raised at the Collinsville Community Information Session

Topic	Issue Raised (as described by participant)
Social impact issues	<ul style="list-style-type: none"> Health impacts of the Project on people who live along the railway corridor. Impacts on how people use the Bowen River, it is the community's main recreational area for camping, fishing and general relaxing. Safety of railway. Need to upgrade the Peter Delemonthe Road, there aren't enough passing lanes, particularly if there is going to be construction traffic on the road. Collinsville is a mining town (not an agricultural town), it needs the workers and the contractors associated with mining to stay alive. The railway needs to be fenced to protect people and animals.
Economic issues	<ul style="list-style-type: none"> Need to employ locally. Need to employ local Indigenous youth. Operational workforce should be based in Collinsville, there is space for up to 5,000 workers. Local procurement policy, support local hotels and suppliers.



Topic	Issue Raised (as described by participant)
Environmental concerns	<ul style="list-style-type: none"> ▶ Air quality; ▶ Freshwater aquatic flora and fauna; ▶ Land disturbance; ▶ Sensitive environmental areas; and ▶ Soils.
Cumulative impact issues	<ul style="list-style-type: none"> ▶ Impacts on existing services (especially health services in the region). ▶ Impacts on the Bowen River (plants, animals and health of the river). ▶ People asked if there were going to be two railway lines constructed and operated (referring to HPPL and Waratah proposed Projects).

3.1.4 Bowen

The Bowen Community Information Session was held on Friday 7 May 2010 from 3.00 to 7.00 pm at the Barrier Reef TAFE. A total of 17 people attended the Session. Table 3-4 contains a list of issues raised by people who participated in the Bowen Community Information Session.

Table 3-4 Issues raised at the Bowen Community Information Session

Topic	Issue Raised (as described by participant)
Social impact issues	<ul style="list-style-type: none"> ▶ Ensure there is adequate infrastructure to support future population growth in the area. ▶ Need to recognise cultural heritage values. ▶ Bowen needs to be sustainable and maybe this Project can help in achieving that. ▶ What about the construction workers who stay of after the Project is over? ▶ Opportunity for local clubs to gain extra members.
Economic issues	<ul style="list-style-type: none"> ▶ Source of local employment and business. ▶ Don't have the FIFO shifts too long, need to respect families.
Environmental concerns	<ul style="list-style-type: none"> ▶ Sustainable development; ▶ Freshwater aquatic flora and fauna; ▶ Coastal processes; ▶ Groundwater; and ▶ Noise and vibration.
Cumulative impact issues	<ul style="list-style-type: none"> ▶ Environment, social and economic impacts of the Project. ▶ Multiple projects impacting on Bowen (not just this Project).

3.1.5 Feedback on the Community Information Sessions

During the Alpha and Clermont Community Information Sessions some participants provided feedback on the sessions.



► Advertising of Community Information Sessions

Participants who provided the feedback explained that they had not received enough notice about the sessions. They advised that they require at least three weeks notice in writing. They also recommended that advertising for the next Community Information Sessions (planned for the draft EIS report) should could include notices to be letterbox dropped around displayed in Alpha and Clermont (e.g. at the post offices and in local businesses).

► Format

Some participants provided feedback on the format of the Community Information Session. They explained their perception of “a deliberate attempt to divide the community” by holding “one on one” meetings as part of the Community Information Sessions. There were recommendations for a public meeting rather than a drop in session so all interested members of the public could receive the same information at once.

► Level and type of information provided

Concerns were raised about the lack of information made available about the Project. It was recommended that a local liaison person be employed to keep the landholders and community members up to date with Project information.

3.2 Meetings with Regional Councils

3.2.1 Barcaldine Regional Council

The Project Team met with the Barcaldine Regional Council (Councillors and staff) on Tuesday 4 May 2010. The Regional Council had previously received Project updates from HPPL. Table 3-5 contains background information and a list of issues raised by Barcaldine Regional Council.

Table 3-5 Issues Raised by the Barcaldine Regional Council

Topic	Issue Raised
Background information	<p>► The town of Alpha was originally a railway town but now is preparing to become a mining town.</p> <p>► Top issues for Council for Alpha and Jericho are:</p> <ul style="list-style-type: none"> – Availability of land (there are only 30 quarter acre blocks available (currently being developed by Council), land availability is restricted because of flooding, water availability and existing power and sewerage capacity; – Lack of water and the need for infrastructure upgrade (Alpha town currently relies on bore water but the aquifers are only shallow); – Unreliable power and the need for infrastructure upgrade; – Sewerage system needs an infrastructure upgrade. <p>► Alpha has the following transport options:</p> <ul style="list-style-type: none"> – 2 passenger trains per week (to Longreach); – 2 passenger bus services per day (Greyhound and Paradise); – 2 freight trucks per week; – 1 freight train per week; and



Topic	Issue Raised
	<ul style="list-style-type: none"> – No commercial flights. ▶ Council is aware that they may need to make amendments to the planning scheme to allow for future development, e.g. industrial areas. ▶ Communication services are limited (still mobile phone (Next G) black spots in town).
Social impact issues	<ul style="list-style-type: none"> ▶ Safety, predominantly road safety, e.g. line of sight on crest of hills such as the turn off to Pine Hill ▶ Alpha is already being impacted, a vacant flat four years ago could be purchased for \$6,000 - \$8,000 now it could sell for \$150,000. A house block four years ago could be purchased for \$8,000 - \$12,000 now sells for \$32,000. There is a lot of interest in housing in Alpha, however houses and house sites are not available. ▶ Properties have not been changing hands like they used to, there is a low steady transition now. People from the coast are heading west and people out west are heading east. ▶ There has been a recent change in the population of Alpha, the number of older people has decreased. There is a 'vacuum' of young people, they leave to attend boarding school until their mid 20's when they might return (usually to get a job in the mines). The boys tend to return but the girls rarely do. ▶ Council would like to see local training and apprenticeship programs for young people (not just boys) to keep young people in the community. ▶ The Council said that they need support to increase the quality and number of medical services currently provided. Staff and volunteers do their best but if more people are going to move to the region then there needs to be an improved level and type of medical service provided (at the moment there is no doctor and the Queensland Ambulance Service ambulance is operated on a volunteer basis). There has been reduction in the numbers of people in Alpha coinciding with the reduction of government services provided to regional areas.
Environmental concerns	<ul style="list-style-type: none"> ▶ Impacts of the Project (predominantly the proposed mine) on ground water as the landholders have a high reliance on ground water because of the intermittent streams.
Cumulative impact issues	<ul style="list-style-type: none"> ▶ Council is trying to manage the opportunities created by all the proponents and their projects to ensure a positive outcome for their region, however waiting on information from the mining companies prior to making any changes (e.g. employment numbers during construction and operation). They explained that locals had seen the 'hype' before and nothing happened and are sceptical of local opportunities. ▶ Council is struggling to attract and retain staff because of the housing impacts, can't meet the employment conditions of the mines (the mines are attracting all the tradesmen). There was the suggestion that the mines could job share with the Councils. ▶ Concern about the skills shortage impacts on property owners who already struggle to get employees and contractors because of the mines.
Landholder impacts	<ul style="list-style-type: none"> ▶ Fencing of the rail corridor and maintenance responsibilities.
Project design	<ul style="list-style-type: none"> ▶ Don't want HPPL to build their own airport, would the existing airport to be upgraded and made common user infrastructure the general public can also use it (increasing services which can be made available in Alpha). ▶ The construction and operation needs to take into consideration the school bus service.



Topic	Issue Raised
	<ul style="list-style-type: none"> Jericho has the land to develop, so maybe an alternative to Alpha for a operational workforces (including service industries) to be located.

3.2.2 Isaac Regional Council

The Project Team met with the Isaac Regional Council (staff) on Wednesday 5 May 2010. Table 3-6 contains background information and a list of issues raised by Isaac Regional Council.

Table 3-6 Issues Raised by the Isaac Regional Council

Topic	Issue Raised
Background information	<ul style="list-style-type: none"> The diversity of towns in the Isaac Region. Clermont was described as a traditional town, with the history of Clermont based in sheep farming, then the transition to gold and copper mining then coal, but being actively supported by the beef industry (which grew after the shearers strikes). Other towns in the Region were described as: <ul style="list-style-type: none"> Moranbah, Middlemount, Glenden and Dysart – mining; Coppabella – rail; Nebo – agriculture and more recently mining. The IRC region is responsible for 75% of Queensland GDP but only receives 0.1% back from the State Government in service delivery (per capita basis). The Isaac Regional Council is currently validating their Community Plan for Clermont under the <i>Sustainable Planning Act 2009</i>. The Community Plan will have a 10 year life and contains the vision of the people living in the Region. It will be completed by July 2010. Clermont will be impacted by the Project because of the social networks between people in the region, how people access the region (e.g. road networks including the Alpha to Clermont Road) and location of services and facilities (e.g. recreational facilities and health services). Clermont is ready to grow, there are already houses ready for purchase and rent, education and medical services are provided. There are two general practitioners, Queensland Ambulance Services, police and dentist in town. Clermont is facing a decreasing population with the closure of the Blair Athol mine, the new Clermont mine will not require the number of positions that were required at Blair Athol. With the existing mines (Moranbah and Dysart) in the area relying on a drive-in/drive-out model, the travel of fatigued workers is a large local issue. The level of legislated involvement of Councils in EIS's is restricted to being able to make comments on the draft TOR and draft EIS which sets up a negative relationship potentially based on conflict, this should be expanded to a more positive negotiation based approach.
Social impact issues	<ul style="list-style-type: none"> Impacts on people living in the Region need to be taken into consideration. It was explained that people living in the Region identified the Project as being beneficial to the region if opportunities are provided (e.g. local employment and procurement). The staff of the IRC also pointed out that people in the region are aware of the negative impacts of development and would like to see these minimised. HPPL needs to work with Council to ensure that future plans (including the construction camps) are taken into consideration for forward planning of the Region.



Topic	Issue Raised
Economic impact issues	<ul style="list-style-type: none"> ▶ The importance of having opportunities created for those towns and regions that will be impacted by the Project. The fly-in/fly-out (FIFO) arrangements do not create local opportunities. ▶ There is a strong business group in Clermont (a subcommittee of the Clermont Progress Association) who would like Council to negotiate with the mining companies on their behalf to ensure that local opportunities are realised. ▶ The business group sees economic development of the region as the way to achieve a sustainable Clermont, by having a permanent and growing population.
Cumulative impact issues	<ul style="list-style-type: none"> ▶ The Region is already experiencing the cumulative impacts of a number of mining projects.
Landholder impacts	<ul style="list-style-type: none"> ▶ Impacts on landholders need to be explored in consultation with them and documented in the SIA. Key issues reported by landholders to the Council include fencing, severance of paddocks, safe occupational crossing for cattle, people and machinery, safety of people living and working on the properties and the impacts of coal dust on cattle.

3.2.3 Whitsunday Regional Council

The Project Team met with the Whitsunday Regional Council (staff) on Thursday 6 and Friday 7 May 2010. Table 3-7 contains background information and a list of issues raised by Whitsunday Regional Council regarding Collinsville.

Table 3-7 Issues Raised by the Whitsunday Regional Council (Collinsville)

Topic	Issue Raised
Background information	<ul style="list-style-type: none"> ▶ The diversity in the Whitsunday Region and the different development and focus of the major towns: <ul style="list-style-type: none"> – Arlie Beach – tourism; – Proserpine – agriculture; – Bowen – agriculture and recently heavy industrial; and – Collinsville – mining mixed with agricultural. ▶ Council representative explained that mining brings people to the Region; however it also takes them away. Workers are supported to have a drive-in/drive out rather than incentives to live with their families in Collinsville, however there aren't the services to support families living in Collinsville (e.g. child care). It is hard to plan and implement for a sustainable community with the highly transient population. Collinsville has a high proportion of drive-in/drive-out workers. ▶ For those people who permanently live in Collinsville, there is a high sense of pride of living in Collinsville and people have wonderful sense of community. ▶ Collinsville has an ageing population and older people want to age in place, they don't want to relocate to the coast. There is only one nursing home in Collinsville and it is at capacity. There needs to be an increase in the services provided to older people so they can remain in Collinsville. ▶ WRC will start working on their Community Plan in the new financial year (2010-2011).
Social impact issues	<ul style="list-style-type: none"> ▶ Many people who live in Collinsville spend their recreational time along the Bowen River, camping and fishing.



Topic	Issue Raised
Economic impact issues	<ul style="list-style-type: none"> Would like Collinsville to be a sustainable community, however it needs families to relocate to Collinsville to achieve this, not just a drive-in/drive-out workforce.

Table 3-8 contains background information and a list of issues raised by Whitsunday Regional Council regarding Bowen.

Table 3-8 Issues Raised by the Whitsunday Regional Council (Bowen)

Topic	Issue Raised
Background information	<ul style="list-style-type: none"> Temporary accommodation in Bowen is limited due to the tourists and seasonal workers who relocate to Bowen (April to September). Accommodation such as caravan parks, hotels, backpackers – the lower cost temporary accommodation. Availability of affordable housing in Bowen is a growing issue as Bowen has pockets of highly disadvantaged community. As house prices increase, there is a portion of the community who become displaced. Concerns about the quality of the facilities at the Merinda accommodation camp. Council representative explained that there are many people who are not staying at the Merinda Camp because of the apparent poor facilities and consequently are preferring to rent.
Social impact issues	<ul style="list-style-type: none"> The majority of people who live in the Bowen district would like the region to develop, but not at the cost or displacing people. Impact of the accommodation camp at Merinda should be looked at.
Environmental impact issues	<ul style="list-style-type: none"> The environmental impacts of development, e.g. impacts on the wetlands near Abbot Point are major concern for people living in the Bowen district.

3.3 Regional Shows

3.3.1 Alpha Regional Show

HPPL had a stand at the Alpha Regional Show (refer to Figure 3-2) staffed by HPPL, AARC and GHD. Approximately 45 people had discussions with the Project Team.

Figure 3-2 Stand at the Alpha Regional Show



Source: photo provided by Ian Dymmock, AARC

Issues raised by community members at the Alpha Regional Show were:

- ▶ Employment and procurement opportunities (e.g. local contractors).
- ▶ General interest in where the Project (mine and rail) is proposed to be constructed.
- ▶ Impacts on landholders and suggestions for how they could be managed.
- ▶ General support for the Project (mine and rail) and opportunities for the region to grow (population) and increased service provision.

3.3.2 Clermont Regional Show

HPPL had a stand at the Clermont Regional Show (refer to Figure 3-3) staffed by HPPL, AARC and GHD. Approximately 45 people had discussions with the Project Team.

Figure 3-3 Stand at the Clermont Regional Show



Source: photo provided by Ian Dymmock, AARC

Issues raised by community members at the Clermont Regional Show were:

- Employment and procurement opportunities (e.g. local contractors).
- General interest in where the Project (mine and rail) is proposed to be constructed.
- Impacts on landholders and suggestions for how they could be managed.
- General support for the Project (mine and rail) and opportunities for the region to grow (population) and increased service provision.

3.4 Project Factsheet and Feedback Forms

GHD only received two completed Community Feedback Forms. The feedback forms were received from the Clermont and Bowen regions. Table 3-9 provides the comments which were received on the Feedback Forms. The information contained in Table 3-9 is verbatim of what was written on the Feedback Forms (statements are not the opinion of GHD).

Table 3-9 Community Response on Feedback Forms

Question	Community Responses	
	4721	4805
What is your post code	4721	4805
What do you like about living in your area?	<i>We have been here all our lives. This is our heritage.</i>	<ol style="list-style-type: none"> 1. No high rise. 2. People living around my home are community minded, still wave and look out for my interest.
What don't you like about living in your area?	<i>We like everything.</i>	<i>1. Our arrogant mayor. The presumptuous twit will not listen, knows it all. But takes credit for other people's hard work.</i>



Community Responses

What are the major issues facing your comments at the moment	<i>We would like our road completely bitumised.</i>	<i>1. Amalgamation of Council's breeds no consultation, just told by public servants of all type, pay rates, tax's etc, we will spend as see fit.</i>
How do you think the Alpha Coal Project will affect the lifestyle of your community?	<i>It will ruin it.</i>	<i>1. Great if you build houses etc dotted around town. Not all this fly in fly out bullshit because it is cheap.</i>
Any other comments about the Alpha Coal Project?	<i>Take the railway along an existing railway or main road so country does not have to be disturbed.</i>	<i>1. Liked route for railway (west). 2. I have no information on railway grades but when crossing Belyando River, building on top of a high dam could overcome the water problems for the area. With money (dam) coming from a federal government grant.</i>



4. Summary of Results

4.1 Overview

Feedback on the Project through the EIA process focused on:

- Regional Councils;
- Residents of towns likely to be impacted by the Project; and
- Directly impacted landholders.

Feedback on the Project was different from each of the regions visited, however these were consistent messages of:

- The concern about the landholder impacts and how the impacts could be managed.
- A desire for the Project to positively contribute to the sustainable growth of towns in the Regions; and
- Application of lessons learnt from similar developments.

In summary the landholders will bear the negative direct impacts and the regions could benefit from the indirect opportunities created by the Project.

4.2 Results

Table 4-1 provides a summary of results for each district.

Table 4-1 Summary of Results Per District as expressed by stakeholders

Region	Summary of Results
Alpha	<ul style="list-style-type: none">▸ Increased focus on the proposed mine rather than the railway;▸ Concerns for directly impacted landholders and how they will be impacted (on families, properties and businesses);▸ Growth opportunities for Alpha township (within current restrictions);▸ Concern of a FIFO workforce (construction and operation);▸ Recognition of limitations for the growth of Alpha;▸ Social impacts are already occurring in Alpha;▸ Opportunities for other towns in the Barcaldine Region;▸ Need for a local HPPL liaison person;▸ Impacts on existing roads from Project vehicles; and▸ Cumulative environmental impacts of the Project (e.g. impacts on the water table).
Clermont	<ul style="list-style-type: none">▸ Focus on the mine and the railway;▸ Growth opportunities for Clermont (ready to grow);▸ Concerns for directly impacted landholders and how they will be impacted (on families, properties and businesses);▸ Concern of a FIFO workforce (construction and operation);▸ Need for a local HPPL liaison person; and



Region	Summary of Results
	<ul style="list-style-type: none">Impacts on existing roads from Project vehicles.
Collinsville	<ul style="list-style-type: none">Focus on the railway;Collinsville is ready to house and service construction and operational workforce;Impact on the environment (including the Bowen River).Concerns for directly impacted landholders and how they will be impacted (on families, properties and businesses);Safety;Need to employ and contract locally; andConcerns about environmental impacts.
Bowen	<ul style="list-style-type: none">Focus on the railway and development at Abbot Point;Environmental impacts (impacts on the wetlands);Future growth associated with the State Development Area (cumulative impacts);Impacts on affordable housing availability; andConcerns about environmental impacts.

4.3 Incorporation of Results

The results of the feedback received during the EIS Public Consultation events were:

- Provided to HPPL and incorporated into project design decisions; and/or
- Utilised in the SIA and draft Social Impact Management Plan or other technical studies in the EIS and the Environmental Management Plan.



Appendix A

Project Team



Consultation Activity	Project Team
Alpha Community Information Session	Nicole Maguire (Community Relations, HPPL) Paul Jackson (EIS Manager, AARC) Ian Dymock (SIA, AARC); Simon Fife (EIS Representative, GHD) Rachel Gibson (SIA, GHD) Roger Cox (Land Agent, GHD)
Clermont Community Information Session	Nicole Maguire (Community Relations, HPPL) Paul Jackson (EIS Manager, AARC) Ian Dymock (SIA, AARC); Simon Fife (EIS Representative, GHD) Rachel Gibson (SIA, GHD) Roger Cox (Land Agent, GHD)
Collinsville Community Information Session	Simon Fife (EIS Representative, GHD) Rachel Gibson (SIA, GHD) Roger Cox (Land Agent, GHD)
Bowen Community Information Session	Nathan Cammerman (Cultural Heritage, HPPL) Simon Fife (EIS Representative, GHD) Rachel Gibson (SIA, GHD) Roger Cox (Land Agent, GHD)
Alpha Regional Show	Nicole Maguire (Community Relations, HPPL) Ian Dymock (SIA, AARC); Rachel Gibson (SIA, GHD) Roger Cox (Land Agent, GHD)
Clermont Regional Show	Stuart Donaldson (Regional Infrastructure Advisor, HPPL) Ian Dymock (SIA, AARC); Rachel Gibson (SIA, GHD)



Appendix B

Advertisements for Community Information Sessions



Central Queensland News



Alpha Coal Project & Kevin's Corner Projects

Environmental Impact Assessment Community Information Sessions

Hancock Coal and Hancock Galilee are investigating the opportunity to develop the Alpha Coal and Kevin's Corner Projects, two thermal coal mines in the Galilee Basin, supported by rail and port facilities. The projects are currently in the feasibility stage, which includes an Environmental Impact Assessment.

As part of the Environmental Impact Assessment for the Alpha Coal and Kevin's Corner Projects, Hancock Coal invites interested people to attend a Community Information Session at a venue closest to you.

Town	Date	Location
Alpha	Tuesday 4 May 2010, 5.00 – 8.00pm	Alpha Town Hall
Clermont	Wednesday 5 May 2010, 3.00 – 7.00pm	The Supper Room, Clermont Community Hall
Collinsville	Thursday 6 May 2010, 3.00 – 7.00pm	Collinsville Community Centre
Emerald	Thursday 6 May 2010, 3.00 – 7.00pm	Emerald Town Hall Auditorium
Barcaldine	Friday 7 May 2010, 3.00 – 7.00pm	Barcaldine Shire Hall
Bowen	Friday 7 May 2010, 3.00 – 7.00pm	Barrier Reef Institute of TAFE


For more information or to register your interest in attending a Community Information Session, please contact Hancock Coal's Community Relations Manager, Nicole Maguire, on 07 3231 9600 or at email address mail@hancockcoal.com.au. Further information is also available at our website, www.hancockcoal.com.au



3169408ash



Bowen Independent

 **HANCOCK COAL PTY LTD**

Alpha Coal & Kevin's Corner Projects
Environmental Impact Assessment
Community Information Sessions

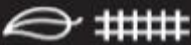
Hancock Coal and Hancock Galilee are investigating the opportunity to develop the Alpha Coal and Kevin's Corner Projects, two thermal coal mines in the Galilee Basin, supported by rail and port facilities. The projects are currently in the feasibility stage, which includes an Environmental Impact Assessment.

As part of the Environmental Impact Assessment for the Alpha Coal and Kevin's Corner Projects, Hancock invites interested people to attend a Community Information Session at a venue closest to you.

ALPHA - Tuesday, 4 May 2010, 5.00 – 8.00pm, Alpha Town Hall.
CLERMONT - Wednesday, 5 May 2010, 3.00 – 7.00pm, The Supper Room, Clermont Community Hall.
COLLINSVILLE - Thursday, 6 May 2010, 3.00 – 7.00pm, Collinsville Community Centre.
EMERALD - Thursday, 6 May 2010, 3.00 – 7.00pm, Emerald Town Hall Auditorium.
BARCADDINE - Friday, 7 May 2010, 3.00 – 7.00pm, Barcaldine Shire Hall.
BOWEN - Friday, 7 May 2010, 3.00 – 7.00pm, Barrier Reef Institute of TAFE.

For more information or to register your interest in attending a Community Information Session, please contact Hancock Community Relations Manager, Nicole Maguire, on 07 3231 9600 or at email address mail@hancockcoal.com.au.


Further information is also available at our website, www.hancockcoal.com.au.

 **HANCOCK GALILEE PTY LTD**

44 Hancock



Miners Midweek

 **HANCOCK COAL PTY LTD**

Alpha Coal Project & Kevin's Corner Projects

Environmental Impact Assessment Community Information Sessions


Hancock Coal and Hancock Galilee are investigating the opportunity to develop the Alpha Coal and Kevin's Corner Projects, two thermal coal mines in the Galilee Basin, supported by rail and port facilities. The Projects are currently in the feasibility stage, which includes an Environmental Impact Assessment.

As part of the Environmental Impact Assessment for the Alpha Coal and Kevin's Corner Projects, Hancock Coal invites interested people to attend a Community Information Session at a venue closest to you.

Town	Date	Location
Alpha	Tuesday 4 May 2010, 5.00 – 8.00pm	Alpha Town Hall
Clermont	Wednesday 5 May 2010, 3.00 – 7.00pm	Clermont Community Hall Supper Room
Collinsville	Thursday 6 May 2010, 3.00 – 7.00pm	Collinsville Community Centre
Emerald	Thursday 6 May 2010, 3.00 – 7.00pm	Emerald Town Hall Auditorium
Barcaldine	Friday 7 May 2010, 3.00 – 7.00pm	Barcaldine Shire Hall
Bowen	Friday 7 May 2010, 3.00 – 7.00pm	Barrier Reef Institute of TAFE

For more information or to register your interest in attending a Community Information Session, please contact Hancock Coal's Community Relations Manager, Nicole Maguire, on 07 3231 9600 or at email address mail@hancockcoal.com.au.

Further information is also available at our website, www.hancockcoal.com.au

 **HANCOCK GALILEE PTY LTD**



Longreach Lead

HANCOCK COAL PTY LTD

Alpha Coal & Kevin's Corner Projects

Environmental Impact Assessment Community Information Sessions

Hancock Coal and Hancock Galilee are investigating the opportunity to develop the Alpha Coal and Kevin's Corner Projects, two thermal coal mines in the Galilee Basin, supported by rail and port facilities. The projects are currently in the feasibility stage, which includes an Environmental Impact Assessment.

As part of the Environmental Impact Assessment for the Alpha Coal and Kevin's Corner Projects, Hancock Coal invites interested people to attend a Community Information Session at a venue closest to you.

Town	Date	Location
Alpha	Tuesday 4 May 2010, 5.00–8.00pm	Alpha Town Hall
Clermont	Wednesday 5 May 2010, 3.00–7.00pm	Supper Room, Clermont Community Hall
Collinsville	Thursday 6 May 2010, 3.00–7.00pm	Collinsville Community Centre
Emerald	Thursday 6 May 2010, 3.00–7.00pm	Emerald Town Hall Auditorium
Barcaldine	Friday 7 May 2010, 3.00–7.00pm	Barcaldine Shire Hall
Bowen	Friday 7 May 2010, 3.00–7.00pm	Barrier Reef Institute of TAFE

For more information or to register your interest in attending a Community Information Session, please contact Hancock Coal's Community Relations Manager, Nicole Maguire, on 07 3231 9600 or at email address mail@hancockcoal.com.au. Further information is also available at our website, www.hancockcoal.com.au

 HANCOCK GALILEE PTY LTD



Appendix C

Snapshot of HPPL website



The Alpha Coal Project - Hancock Coal Pty Ltd - Windows Internet Explorer

http://hancockcoal.com.au/go/current-projects/the-alpha-coal-project

File Edit View Favorites Tools Help

The Alpha Coal Project - Hancock Coal Pty Ltd

HANCOCK COAL PTY LTD

- About Hancock Coal
- Current Projects
 - The Alpha Coal Project
 - Investment and Project Benefits
 - Coal
 - Rail
 - Port
 - Government, Community and Heritage
 - Map
 - Kevin's Corner
 - News and Presentations
 - HCPL Publications
 - Employment
 - Contact
 - Back to HPPL

THE ALPHA COAL PROJECT

The Alpha Coal Project is a well known thermal coal deposit within the Galilee Basin in Central Queensland, Australia. The deposit has massive resources of thermal coal in the premium location of the basin.

Described as the jewel in the crown of the Galilee, the Alpha Coal Project will be a 30 Mtpa open-cut coal mine, with the potential for the future development of significant underground reserves. The open-cut operation has an expected mine life of 30 plus years, with sufficient Joint Ore Resources Committee (JORC) compliant resources to extend the project life well beyond 30 years. The Alpha Coal and Kevin's Corner combined resource of 6.1 billion tonnes of JORC compliant thermal coal is anticipated to increase to in excess of 7 billion tonnes following further drilling in 2010.

The project deposit lies within the late Permian Colinaea and Bandanna Formations. The Galilee Basin is a world-class location consisting of four main thermal coal seams suitable for the global export market. Within the deposit there is additional potential for liquefaction and gasification.

The coal seams dip gently from east to west varying in thickness from 5 metres to 8 metres, which enables high production open-cut mining.

Exploration to date has concentrated on the shallow coal suitable for open-cut mining, with the potential for resources to be substantially upgraded with further drilling to the west.

Alpha Coal Project - competitive advantages

- > Most extensively delineated deposit in the Galilee Basin
- > Superior Hargrave Grindability Index (HGI) compared to Surat Basin (Queensland)
- > Calorific Value (CV) competitive with Bowen and Surat Basins (Queensland)
- > Low sulfur content
- > Ideal Asia-Pacific and Indian market proximity
- > Strategic partnership approach
- > Independent

Washed Coal Specifications

Parameter	Washed Coal
Ash%	9.5
Gross Calorific Value (kcal/kg)	8000
Total Sulfur%	0.45
HGI	50-55



Appendix D

Factsheet



Alpha Coal Project Statement of Intent Background

Hancock Coal is currently conducting an approximate 100km coal mine supply feasibility study.



As part of the process for the Project, the Works Organisation is preparing an Environmental Impact Statement.

Hancock Coal is currently on the mine, and Resource Conservation undertakes the environmental management.

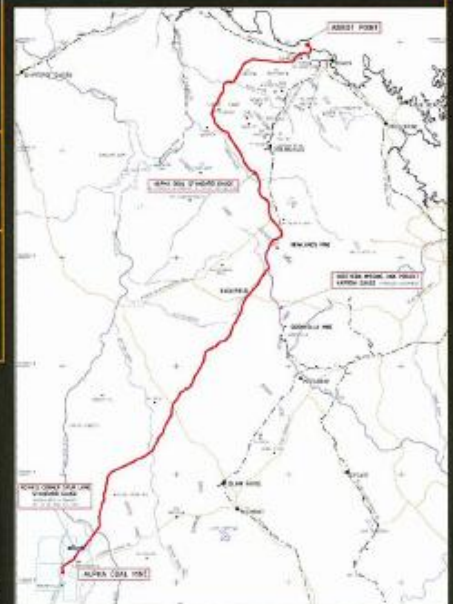
This fact sheet provides an overview of the project.

The Rail Project

Hancock Coal is currently on the mine, and Resource Conservation undertakes the environmental management.

Hancock Coal is currently on the mine, and Resource Conservation undertakes the environmental management.

KEY FEATURE	CONSTRUCTION
Location	Alpha Mine to Abbot Point
Local Government Areas	Barcaldine Regional Council Isaac Regional Council Whitsunday Regional Council
Ownership	Hancock Coal Pty Ltd
Associated Infrastructure	e.g. construction camps, rail loops, marshalling yard complete with maintenance facilities
CONSTRUCTION	
Timeframe	2011
Workforce	Up to 2500
Location of Construction Accommodation	Construction is planned to start at up to five locations along the rail corridor. The exact locations are still to be determined.
OPERATION	
Timeframe	2013 (30 years+ life span)
Workforce	Up to 1500
Amount of Coal to be transported	30 million tonnes per annum (Mtpa) of coal will be transported from the mine to the port, with the possibility of increasing to 80 Mtpa as required.
Type of Trains	Trains will be diesel-electric.
Track Gauge	Standard gauge (1435mm)
Size of Trains	The rail system will be standard gauge with trains of approximately 24,000 tonnes payload.
Speed of Trains	Trains will operate at a maximum speed of 80km/h when fully loaded.
Frequency of Trains	Coal will be transported 24 hours a day, 7 days a week



Recommended alignment
- map not to scale.

Infrastructure

As part of the EIA process, Hancock Coal has lodged an application for the Alpha Coal Project under section 150 of the Environmental Protection Act 1986. If you have any questions about the EIA process, please contact details below.

EIS process

The Alpha Coal Project is being developed by Hancock Coal Works Organisation. The Department of Environment & Heritage is preparing to approve the Terms of Reference for the Environmental Impact Statement (EIS) process.

ACRONYM		EXPLANATION
BFS	Bankable Feasibility Study	A bankable feasibility study aims to establish if a project is technically, operationally and commercially viable. The term "bankable" means that the study document demonstrates, with a supportive body of evidence, that the project is viable.
EIA	Environmental Impact Assessment	A process that is followed to identify impacts (positive and negative) associated with a proposed development.
EIS	Environmental Impact Statement	A report that is produced from the EIA process, describing the impacts associated with a proposed development, management programs and monitoring strategies.
SIA	Social Impact Assessment	A sub-process of the EIA that focuses on the impacts on people who may be directly and indirectly impacted by a proposed project. It is also a report that is published as part of the EIS.
TOR	Terms of Reference	A list of issues that need to be researched during the EIA and published as part of the EIA. For the Alpha Coal (Rail) Project, the TOR is written by the Coordinator-General and is published on its website http://www.dip.qld.gov.au/projects/mining-and-mineral-processing/coal/alpha-coal-project.html

Community Information Sessions

Community Information Sessions on the Environmental Impact Assessment process are planned to be held in the first week of May 2010.

Town	Date	Location
Alpha	Tuesday 4 May 2010, 5.00 – 8.00pm	Alpha Town Hall
Clermont	Wednesday 5 May 2010, 3.00 – 7.00pm	The Supper Room, Clermont Community Hall
Collinsville	Thursday 6 May 2010, 3.00 – 7.00pm	Collinsville Community Centre
Emerald	Thursday, 6 May 2010, 3.00 – 7.00pm	Emerald Town Hall Auditorium
Barcaldine	Friday 7 May 2010, 3.00 – 7.00pm	Barcaldine Shire Hall
Bowen	Friday 7 May 2010, 3.00 – 7.00pm	Barrier Reef Institute of TAFE

GHD is preparing the EIS on behalf of Hancock Coal



Community Information Sessions for the Environmental Impact Statement are planned for August 2010. Again dates and locations will be advertised on the Hancock Coal website and in local newspapers closer to the time.

More Information

If you would like any further information about the Alpha Coal Project, please contact Hancock Coal on 1300 279 766 or the general office number on 3231 9600.

Source: based on environmental impact statement




Appendix E

Feedback Form



 HANCOCK COAL PTY LTD

 HANCOCK GALILEE PTY LTD

Feedback section

The information you provide in the feedback form will allow us to gather information on what you value about the area in which you live and the potential changes that may result from the development of the Alpha Coal and Kevin's Corner Projects.

Please note that completed feedback forms need to be received no later than Friday 28 May 2010 to be included in the Alpha Coal Project EIS. You can also provide comments on the draft EIS to the Coordinator-General during the public display period.

What is your post code?

What do you like about living in your area?

What don't you like about living in your area?

What are the major issues facing your community at the moment?

How do you think the Alpha Coal Project will affect the lifestyle of your community?

Any other comments about the Alpha Coal Project?

Would you like to be on the Hancock Coal contact database and receive project updates (e.g. dates and locations of Community Information Sessions)? If so, please provide the following information:

Name

Preferred contact address (postal or e-mail)

Phone number

Privacy Statement – Hancock Coal and GHD respect and abide by the privacy laws under which this information is provided. Information provided will not be made available to any other organisation, company or entity. By completing this feedback form and sending it to GHD, you are providing GHD with permission to use the information in the Environmental Impact Statement for the Alpha Coal Project (Rail). If you have any concerns please contact Hancock Coal or GHD.



GHD

201 Charlotte Street Brisbane QLD 4000

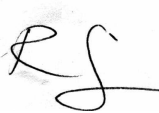

GPO Box 668 Brisbane QLD 4001

T: (07) 3316 3000 F: (07) 3316 3333 E: bnemail@ghd.com.au

© GHD 2010

This document is and shall remain the property of GHD. The document may only be used for the purpose for which it was commissioned and in accordance with the Terms of Engagement for the commission. Unauthorised use of this document in any form whatsoever is prohibited.

Document Status

Rev No.	Author	Reviewer		Approved for Issue		
		Name	Signature	Name	Signature	Date
0	S Oldroyd	R Gibson		J Keane		29/07/2010